

Stars and Stripes Forever

Tuba

Foxtrot

John Philip Sousa
arr. Mark Schubert

Swing! ♩ = $\frac{3}{4}$ ♩ = 104

7

Measures 1-6 of the tuba part. The key signature has two flats (B-flat and E-flat), and the time signature is 4/4. The first measure starts with a dynamic marking of *f*. The piece concludes with a double bar line and a dynamic marking of *mf*.

7

Measures 7-12. Measure 7 begins with a dynamic marking of *mf*. The piece ends with a double bar line.

13

Measures 13-18. Measure 13 starts with a dynamic marking of *mp*. Measure 18 ends with a double bar line.

19

Measures 19-25. Measure 19 starts with a dynamic marking of *f*. Measure 25 ends with a double bar line.

26

Measures 26-31. Measure 26 starts with a dynamic marking of *p*. Measures 29-31 feature triplet markings above the notes. Measure 31 ends with a double bar line.

32

Measures 32-36. Measure 32 starts with a dynamic marking of *mp*. Measures 33-36 feature triplet markings above the notes. Measure 36 ends with a double bar line.

37

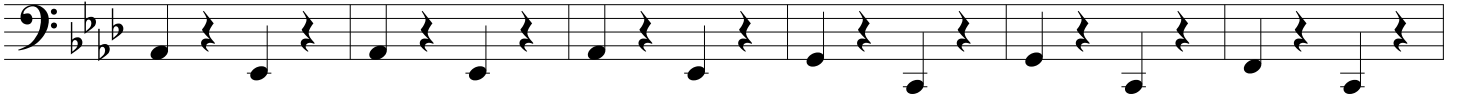
Measures 37-42. Measure 37 starts with a dynamic marking of *mf*. Measure 42 ends with a double bar line.

43

Measures 43-48. Measure 43 starts with a dynamic marking of *mf*. Measure 48 ends with a double bar line.

Stars and Stripes Forever

142



148



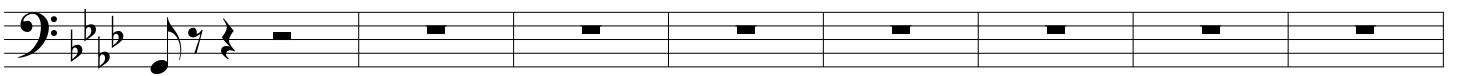
154



159



164



172



178



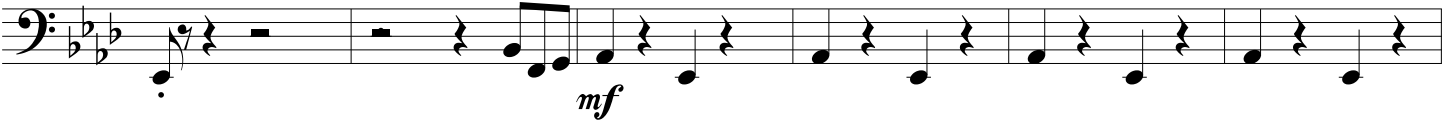
183



189



195



201



207



213

